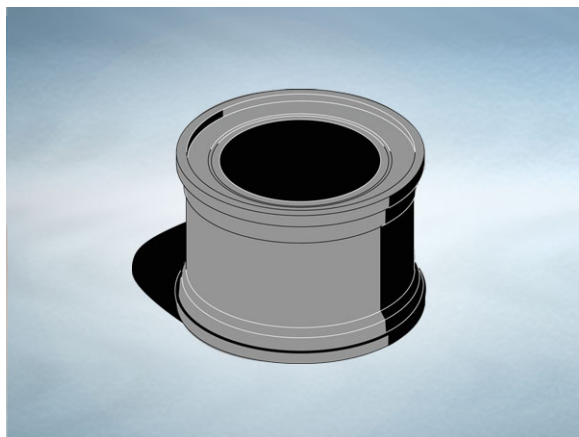


Product Details

T1103 Adaptor

Technical Data



Dimensions:

140 dia. overall size

92 - Length

Connection - 4" Supersleve (100mm)

Materials - HDPE, Neoprene

Weight - 0.2 kg

General Description:

T series Pipework Adaptor. Push fit coupling BS 416 / 437 to Supersleve.

All dimensions are in millimetres unless stated. In line with general practice all dimensions shown are nominal.

Wade International

Third Avenue, Halstead, Essex, CO9 2SX.

Telephone: +44 (0)1787 475151

Fax: +44 (0)1787 475579

e-mail: wadetech@alumascwms.co.uk

website: <https://www.alumascwms.co.uk/brands/wade/>